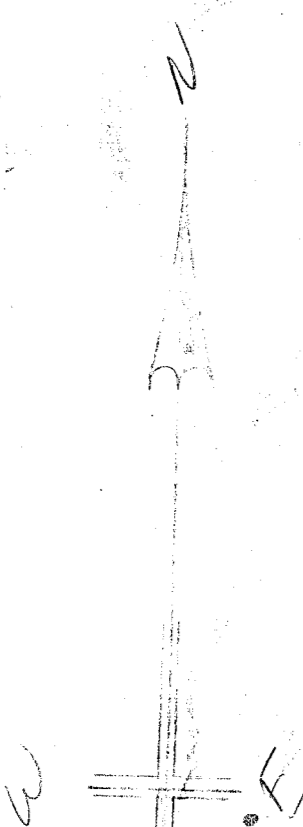


#29381  
Filed Pursuant to  
Order of Dec. 5  
94  
P. Hamaworth  
Recorder's Office  
Greenville, S.C.

124/452

124/335

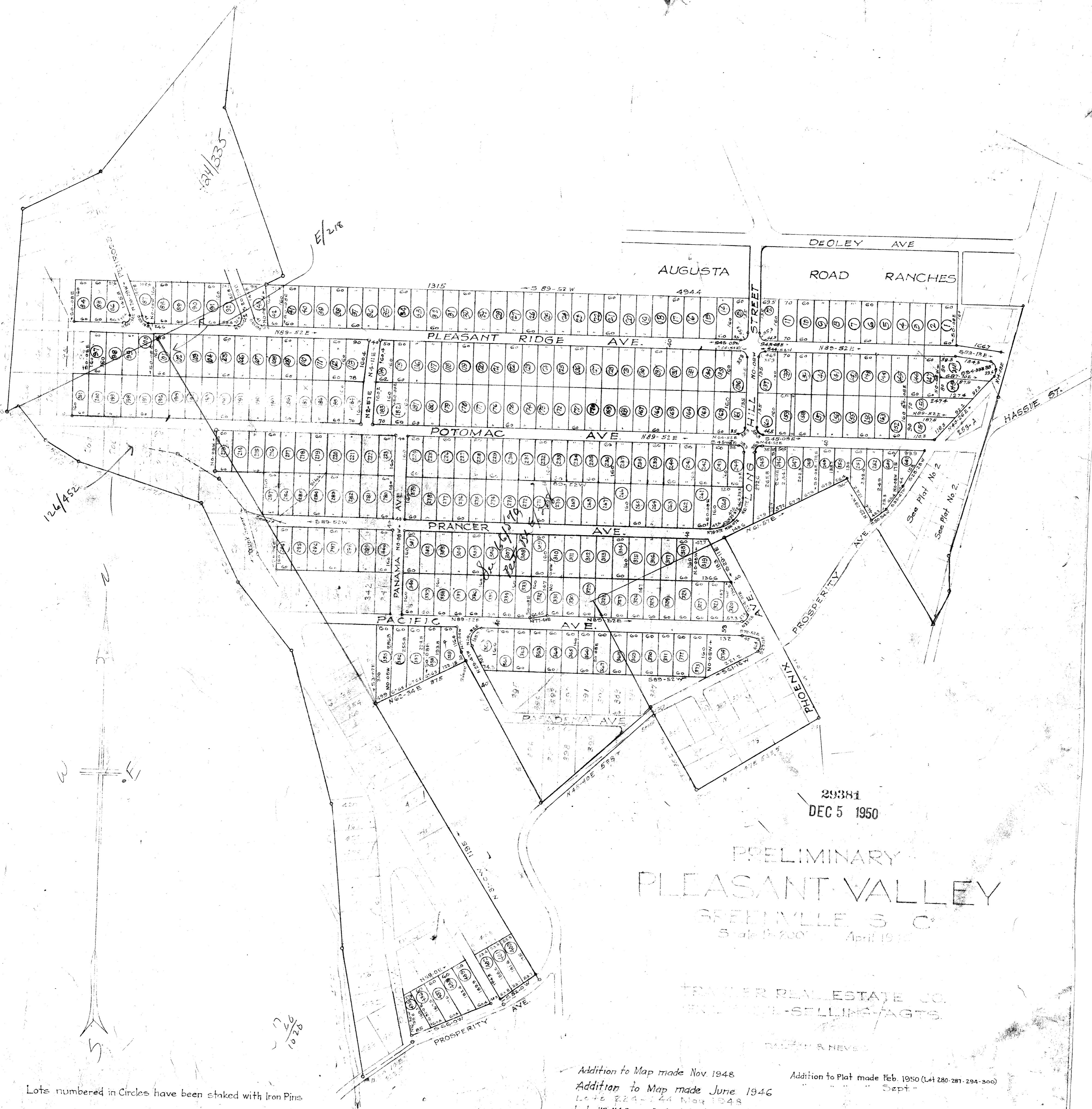
E/216



17  
26  
10/20

Lots numbered in Circles have been staked with Iron Pins

222-243-248-227



29381  
DEC 5 1950

# PRELIMINARY PLEASANT VALLEY

GREENVILLE, S. C.  
Scale 1"=200' April 1948

TRAVLER REAL ESTATE CO.  
PLAT-SELLING AGTS.

DALTON & NEVELL

Addition to Map made Nov. 1948  
Addition to Map made June 1946  
Lots 222-244 Map 1948  
Lots 113-114 & 183 Revised Sept. 1948  
" 153-246 " Aug 1949

Addition to Plat made Feb. 1950 (Lot 280-281-294-300)  
" " " " Sept. "